



COMMERCIAL FLOORING

- ▶ Combine colour, performance and design to deliver a durable floor finish in commercial venues and retail environments.

Commercial Flooring Range



Flowcrete's Commercial Flooring range has been developed to deliver the ultimate in aesthetic appeal, without compromising on performance.

Available in a range of attractive smooth, flaked and stone finishes, our seamless resin flooring solutions provide an appealing surface underfoot.

Durable formulations take heavy footfall and rigorous cleaning regimes in their stride, ideally suited to public venues that might be subject to high levels of foot traffic but require a system with extensive design options.

Added benefits of impressive slip resistance, noise reduction and versatility result in a range of flooring solutions ideally suited to a variety of commercial environments.

Application Suitability



Retail



Transport



Stadia



Healthcare



Education



Leisure



Technical Profile

TEMPERATURE RESISTANCE

RUSTIK

Tolerant of sustained temperatures up to 60°C

RUSTIK UV

Tolerant of sustained temperatures up to 65°C

SLIP RESISTANCE

TRRL Pendulum Slip Test

Dry >40
Wet 36

BOND STRENGTH

> 1.5MPa†

COMPRESSIVE STRENGTH

BS 6319

>30N/ mm²

SPEED OF CURE

Light Traffic

10°C

36 hrs

20°C

24 hrs

30°C

16 hrs

Full Traffic

72 hrs

48 hrs

36 hrs

Full Chemical Cure

12 days

7 days

6 days

†Assumes concrete compressive strength is greater than 25 N/ mm²

Rustik & Rustik UV (6 mm)

Rustik and Rustik UV are colourful natural stones encapsulated in a clear resin binder.

While Rustik is ideal for use in car showrooms, offices, restaurants, retail boutiques and leisure facilities, Rustik UV's UV stable, aliphatic resin binder makes the system suitable in a range of outdoor commercial applications.

Standard Colours*



Coral Tree



Deep Fir



Palm Leaf



Red Wood



Sand Dune



Wheatfield

*The applied colours may differ from the examples shown. For a full colour chart and samples, contact your local Flowcrete office.

Technical Profile

TEMPERATURE RESISTANCE

Tolerant of sustained temperatures up to 60°C

FIRE RESISTANCE

BS 476-7 Spread of Flame	Class 2
-----------------------------	---------

SLIP RESISTANCE

TRRL Pendulum Slip Test	Dry >40
-------------------------	---------

ABRASION RESISTANCE

BS 204-2	Grade AR2
----------	-----------

COMPRESSIVE STRENGTH

BS 6319	>55 N/ mm ²
---------	------------------------

SPEED OF CURE

	10 °C	20 °C	30 °C
Light Traffic	24 hrs	20 hrs	16 hrs
Full Traffic	72 hrs	48 hrs	36 hrs
Full Chemical Cure	12 days	7 days	6 days

Mondéco Crystal (8 mm)

A seamless epoxy resin terrazzo with clear crystal glass aggregates.

The solvent free, highly decorative system is suitable for heavy duty environments.

Standard Colours*



Diamond



Aquamarine



Blue



Grey



Yellow



Green



Violet



Ebony



Technical Profile

TEMPERATURE RESISTANCE	
Tolerant of sustained temperatures up to 60°C	
FIRE RESISTANCE	
BS 476-7 Spread of Flame	Class 2
SLIP RESISTANCE	
TRRL Pendulum Slip Test	Dry >40
COMPRESSIVE STRENGTH	
BS 6319	>55 N/ mm ²

SPEED OF CURE	10°C	20°C	30°C
Light Traffic	24 hrs	20 hrs	16 hrs
Full Traffic	72 hrs	48 hrs	36 hrs
Full Chemical Cure	12 days	7 days	6 days

Mondéco Mirrazzo (7 mm)

A seamless epoxy resin terrazzo floor finish that utilises a blend of recycled glass and metallic particles.

This highly decorative system is suitable for airport and railway terminals, shopping centres, hotels, restaurants, and environments where aesthetics and durability is of paramount concern.

Standard Colours*



Black Diamond



Graphite



Iron Ore



Peridot



Aquamarine

Mondéco Special (8–15 mm)

A seamless epoxy resin terrazzo floor finish with mother of pearl, glass and crushed marble aggregates.

Mondéco Seamless Terrazzo is suitable for airport and railway terminals, shopping centres, hotels, restaurants, and environments where design, chemical resistance and durability are of paramount concern.

Pick and Mix

Pick your resin matrix colour and select one of the aggregate blends to obtain a unique floor finish.

Technical Profile

TEMPERATURE RESISTANCE	
Tolerant of sustained temperatures up to 60°C	
FIRE RESISTANCE	
BS 476-7 Spread of Flame	Class 2
SLIP RESISTANCE	
TRRL Pendulum Slip Test	Dry >80
WATER PERMEABILITY	
Karsten Test	Nil (Impermeable)

SPEED OF CURE	10°C	20°C	30°C
Light Traffic	24 hrs	16 hrs	10 hrs
Full Traffic	72 hrs	48 hrs	36 hrs
Full Chemical Cure	12 days	7 days	7 days

*The applied colours may differ from the examples shown. For a full colour chart and samples, contact your local Flowcrete office.

Technical Profile

TEMPERATURE RESISTANCE			
Tolerant of sustained temperatures up to 60°C			
FIRE RESISTANCE			
BS EN 13501-1	Class C _{fi} s1		
SLIP RESISTANCE			
TRRL Pendulum Slip Test	Dry >40		
WATER PERMEABILITY			
Karsten Test	Nil (Impermeable)		
COMPRESSIVE STRENGTH			
BS 6319	>60 N/mm ²		
SPEED OF CURE	10°C	20°C	30°C
Light Traffic	36 hrs	24 hrs	12 hrs
Full Traffic	72 hrs	48 hrs	36 hrs
Full Chemical Cure	12 days	7 days	6 days

Peran STB (2–3 mm)

A hard-wearing, decorative coating with quartz beads in a clear resin.

The positively textured floor system is ideal for use in both wet and dry environments.

Standard Colours*

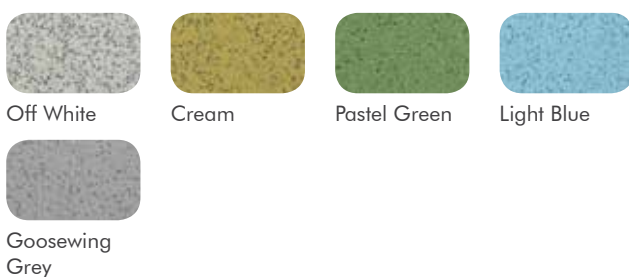


Flowshield Quartz (2–3 mm)

A self-smoothing epoxy resin flooring system with high impact resistance and a decorative, speckled finish.

Ideally suited to back of house areas and corridors where superior durability is required.

Standard Colours*



Technical Profile

TEMPERATURE RESISTANCE			
Tolerant of sustained temperatures up to 60°C			
FIRE RESISTANCE			
BS 476-7 Spread of Flame	Class 2		
SLIP RESISTANCE			
BS 7976-2	Dry >67		
WATER PERMEABILITY			
Karsten Test	Nil (Impermeable)		
SPEED OF CURE	10°C	20°C	30°C
Light Traffic	36 hrs	28 hrs	24 hrs
Full Traffic	72 hrs	48 hrs	36 hrs
Full Chemical Cure	12 days	7 days	6 days



Technical Profile

TEMPERATURE RESISTANCE

Tolerant of sustained temperatures up to 40°C

FIRE RESISTANCE

DIN 4102

Class 1 <50 mm

SLIP RESISTANCE

BS 7976-2

Dry >40

ABRASION RESISTANCE

BS 8204-2

Class AR2

SPEED OF CURE

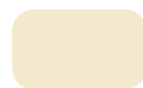
	10°C	20°C	30°C
Light Traffic	48 hrs	24 hrs	16 hrs
Full Traffic	96 hrs	48 hrs	48 hrs
Full Chemical Cure	14 days	5 days	4 days

Peran Comfort (2–3 mm)

A self-smoothing flexible resin floor coating with an attractive, matt finish.

Designed for use in contemporary environments that require a modern, minimalist finish such as offices, education facilities and department stores.

Standard Colours*†



Oyster White



Signal White



Pebble Grey



Light Grey

For a full Technical Profile, contact your local Technical Department.

*The applied colours may differ from the examples shown. For a full colour chart and samples, contact your local Flowcrete office.

†Bright colour palette available in addition to the above colours.

Technical Profile

TEMPERATURE RESISTANCE

Tolerant of sustained temperatures up to 50°C

FIRE RESISTANCE

BS 476-7
Surface Spread of Flame Class 2

SLIP RESISTANCE

BS 7976-2 Dry > 40

ABRASION RESISTANCE

BS 8204-2 Class AR2

COMPRESSIVE STRENGTH

BS 6319 55 N/ mm²

SPEED OF CURE

	10 °C	20 °C	30 °C
Light Traffic	24 hrs	12 hrs	6 hrs
Full Traffic	72 hrs	48 hrs	24 hrs
Full Chemical Cure	12 days	7 days	7 days

Peran SL (2 mm)

An attractive, high-gloss, self-smoothing epoxy floor finish.

Ideal for use in high-end commercial spaces.

Standard Colours*



Technical Profile

TEMPERATURE RESISTANCE	
Tolerant of sustained temperatures up to 50°C	
SLIP RESISTANCE	
TRRL Pendulum Slip Test	Dry >40
ABRASION RESISTANCE	
BS 8204-2	Class AR2
BOND STRENGTH	
>1.5 MPa†	
WATER PERMEABILITY	
Karsten Test	Nil (Impermeable)
SPEED OF CURE (PER COAT)	
Full Traffic	2 Hours
Full Chemical Cure	2 Hours

†Assumes concrete compressive strength is greater than 25 N/mm²

Flowfast Kristalina

(Thickness dependent on specification)

An 8 mmA resin floor system with a flake and glitter scatter finish.

Sparkling aesthetic, ideal for modern environments.

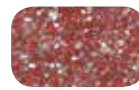
Standard Colours*



Pacific Blue



Azure Blue



Cranberry



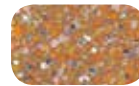
Emerald



Granite



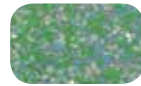
Ebony



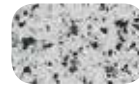
Clementine



Gold



Peacock



Dalmation

Flowfast Terroso

(Thickness dependent on specification)

A decorative methyl methacrylate (8 mmA) resin floor system with a flaked finish.

Also available in epoxy technology.

Standard Colours*



Cream
111



Beige
112



Red
311



Blue
511



Light Grey
711



Signal Grey
712



Mid Grey
713



Dark Grey
714

*The applied colours may differ from the examples shown. For a full colour chart and samples, contact your local Flowcrete office.

Technical Profile

TEMPERATURE RESISTANCE	
Tolerant of sustained temperatures up to 50°C	
FIRE RESISTANCE	
BS EN 13501-1	Class C _{fl} s1
SLIP RESISTANCE	
TRRL Pendulum Slip Test	Dry >40
ABRASION RESISTANCE	
BS 8204-2	Class AR2
WATER PERMEABILITY	
Karsten Test	Nil (Impermeable)
SPEED OF CURE: 0-30°C	
Light Traffic	2 Hours
Full Traffic & Chemical Cure	2 Hours



Technical Profile

TEMPERATURE RESISTANCE	
Tolerant of sustained temperatures up to 60°C	
FIRE RESISTANCE	
BS 476-7 Surface Spread of Flame	Class 2
SLIP RESISTANCE	
TRRL Pendulum Slip Test	Dry >40
ABRASION RESISTANCE	
BS 8204-2	Class AR2

SPEED OF CURE	10°C	20°C	30°C
Light Traffic	36 hrs	24 hrs	12 hrs
Full Traffic	72 hrs	48 hrs	24 hrs
Full Chemical Cure	12 days	7 days	6 days

Urban Expressions

(Thickness dependent on specification)

An artistic, decorative polyurethane resin floor finish with a unique, multi-dimensional swirled effect.

Owing to its contemporary finish, Urban Expressions is ideally suited to retail stores and high end boutiques as well as leisure facilities.

Standard Colours*



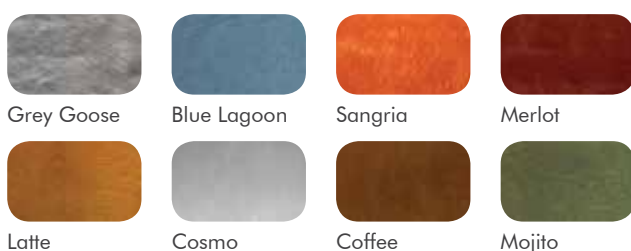
Metallic Expressions

(Thickness dependent on specification)

A seamless, decorative, artistic, advanced polyurea resin technology.

Metallic Expressions offers impressive wear resistance, for application in busy commercial environments, and is easy to clean and maintain.

Standard Colours*



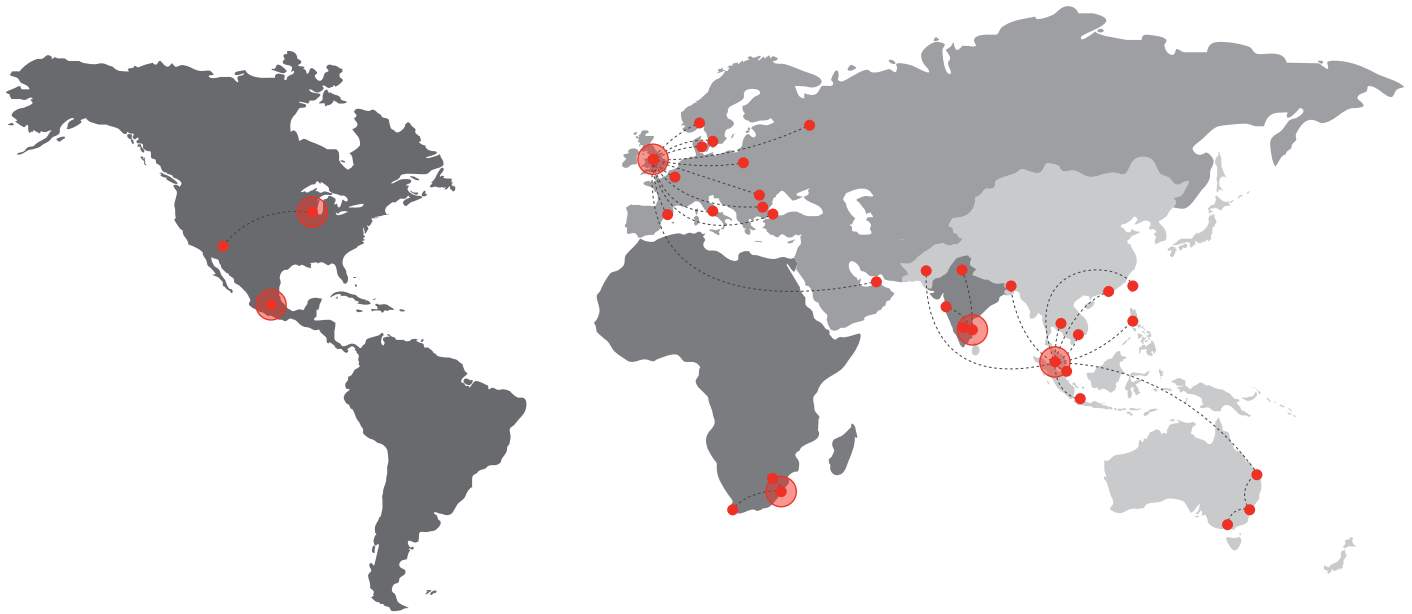
*The applied colours may differ from the examples shown. For a full colour chart and samples, contact your local Flowcrete office.

Technical Profile

TEMPERATURE RESISTANCE	
Tolerant of sustained temperatures up to 70°C	
FIRE RESISTANCE	
BS 476-7 Surface Spread of Flame	Class 1
SLIP RESISTANCE	
TRRL Pendulum Slip Test	Dry >40
BOND STRENGTH	
> 1.5 MPa [†]	

SPEED OF CURE	20°C	35°C
Light Traffic	19 hrs	15 hrs
Full Traffic	24 hrs	20 hrs
Full Chemical Cure	7 days	6 days

[†]Assumes concrete compressive strength is greater than 25 N/ mm²



Flowcrete

World leader in seamless resin flooring solutions and other specialist coatings.

Africa

South Africa +27 31 701 0017 southafrica@flowcrete.com

Asia Pacific (APAC)

Australia	+61 7 3205 7115	australia@flowcrete.com
Bangladesh	+88 02 985 7222	bangladesh@flowcrete.com
Hong Kong	+852 2795 0478	hongkong@flowcrete.com
Indonesia	+62 21 252 3201	indonesia@flowcrete.com
Malaysia	+60 3 6277 9575	asia@flowcrete.com
Pakistan	+60 3 6277 9575	pakistan@flowcrete.com
Philippines	+63 2 834 6506	philippines@flowcrete.com
Singapore	+60 3 6277 9575	singapore@flowcrete.com
Taiwan	+60 3 6277 9575	taiwan@flowcrete.com
Thailand	+66 2539 3424	thailand@flowcrete.com
Vietnam	+84 28 6287 0846	vietnam@flowcrete.com

Europe & Middle East (EME)

Bulgaria	+359 898 61 58 31	bulgaria@flowcrete.com
Denmark	+46 435 40 01 10	denmark@flowcrete.com
France	+33 1 60 61 74 42	france@flowcrete.com
Italy	+39 339 4853258	italy@flowcrete.com
Norway	+47 6486 0830	norway@flowcrete.com
Poland	+48 22 879 8907	poland@flowcrete.com
Romania	+40 766 596 991	romania@flowcrete.com
Russia	+7 916 931 3513	russia@flowcrete.com
Spain	+34 937 07 0872	spain@flowcrete.com
Sweden	+46 435 40 01 10	sweden@flowcrete.com
Turkey	+90 212 2946570	turkey@flowcrete.com
UAE	+971 4 347 0460	uae@flowcrete.com
UK	+44 (0) 1270 753 000	uk@flowcrete.com

India

India +91 44 40176600 india@flowcrete.com

North America

Mexico	+55 44 40 94 00	mexico@flowcrete.com
USA	+1 513-943-4225	americas@flowcrete.com